

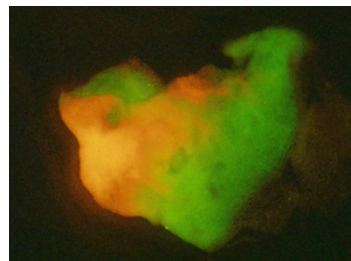
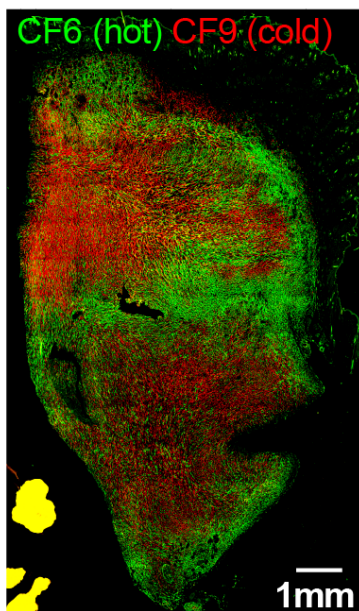
**Lab Technician – Cancer Immunology
Reeves Lab**

Huntsman Cancer Institute, University of Utah, Salt Lake City, UT

The Reeves Lab is hiring a lab technician to assist with cancer immunology research. Our lab studies tumor heterogeneity and how it impacts the immune response to cancer. The Reeves Lab has established a novel system to model tumor heterogeneity *in vivo*, in which we can create heterogeneous tumors made up of multiple, fluorescently-labeled tumor populations. The fluorescent labels allow us to track each population within the tumor and analyze both the local and global immune response. We are hiring a lab technician, who will be directly involved in running *in vitro* and *in vivo* experiments making use of this system to study how tumor heterogeneity shapes the spatial organization of immune cells and immune activity in a tumor.

The technician will assist with cell culture, mouse experiments, immunotherapy studies, flow cytometry, and imaging analysis. Additionally, the technician will assist with ordering lab supplies, lab organization, and other administrative tasks. Candidates should have strong organizational and communication skills, be highly motivated, and be capable of working independently. A 2-year commitment will be preferred.

To learn more about the position and apply: <https://utah.peopleadmin.com/postings/128440>



Images of model heterogeneous tumors comprised of “immune hot” (green) and “immune cold” (red) tumor cells. Our model system enables us to precisely track the constituent populations within a tumor and study how they impact the spatial organization and function of immune cells in the tumor.

Left: 5mm tumor section; Above: 200um tumor slice